

SCIENCE PUZZLERS, TWISTERS & TEASERS

Light and Our World

Riddle-Eye-O

1. "See" if you can answer the riddles below. Write each item in the space provided.
 - a. In bright light I hardly show,
but dimness causes me to grow. _____
 - b. Brown, green, hazel, or blue,
I provide the eye its hue. _____
 - c. I focus light to the back of the eye,
and change shape for things far and nigh. _____
 - d. I'm clear on my role to protect the eye
and refract the light as it passes by. _____
 - e. The back of the eye is where I am found;
the real image forms on me, upside down. _____

Sound Alikes

2. Each clue below will lead you to one or two short words. Combine the syllables to find the hidden terms, which are used in the study of light.

a. another word for hotel	tunafish package	going down a hill, or a plane going down to land
b. a machine for making rugs or fabric	not out but _____	She/ her He/him We/_____
c. what you mop in the kitchen	It comes between R and T.	a smell or odor

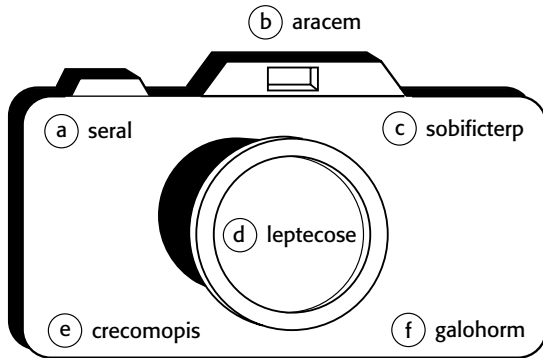
Word Connections

3. Each of the following sentences includes a hidden vocabulary word from the chapter. These words can be found by looking at part of one word and connecting it to the beginning of the next word. For example, *dog* could be hidden in *Judo games*. Circle the hidden words below.
 - a. I eat popcorn each time I go to the movie theater.
 - b. I rise very early in the morning.

Light and Our World, continued

Lights! Camera! Action!

4. Rearrange the letters in the camera below to form words related to light and technology.



- a. _____
- b. _____
- c. _____
- d. _____
- e. _____
- f. _____

Some Light Math

5. Choose a number greater than 0 and less than 21 and enter it in the first box. Then decide if each statement is true or false. Circle the mathematical statement under the column that matches your answer. Then perform that operation on your number, placing the new value into the next box. Answer all the questions this way. If the final number doesn't equal your original number, check your math and your knowledge of light!



Starting number:

- a. Visible objects that are not a light source are luminous.
- b. Halogen lights were originally developed for airplanes.
- c. Neon light is emitted from energized atoms of certain gases.
- d. Vapor light is produced when electrons combine with water vapor.
- e. Light waves travel in straight lines.
- f. Light does not actually travel through a virtual image.
- g. Objects appear smaller in a convex mirror.
- h. A lens that is thicker at the edges than in the middle is a convex lens.

TRUE	<input style="width: 40px; height: 25px;" type="text"/>	FALSE
+ 7	<input style="width: 40px; height: 25px;" type="text"/>	+ 9
× 6	<input style="width: 40px; height: 25px;" type="text"/>	× 3
− 30	<input style="width: 40px; height: 25px;" type="text"/>	− 20
× 3	<input style="width: 40px; height: 25px;" type="text"/>	× 2
÷ 4	<input style="width: 40px; height: 25px;" type="text"/>	÷ 5
+ 21	<input style="width: 40px; height: 25px;" type="text"/>	+ 20
÷ 3	<input style="width: 40px; height: 25px;" type="text"/>	÷ 9
− 8	<input style="width: 40px; height: 25px;" type="text"/>	− 11